

A46 Newark Bypass

Scheme Number: TR010065

7.15 Suggested Accompanied Site Inspection (ASI) itinerary

APFP Regulation 5(2)(q)

Planning Act 2008

Volume 7
01 October 2024

Infrastructure Planning

Planning Act 2008

**The Infrastructure Planning
(Applications: Prescribed Forms and
Procedure) Regulations 2009**

A46 Newark Bypass
Development Consent Order 202[x]

Suggested Accompanied Site Inspection (ASI) itinerary

Regulation:	APFP Regulation 5(2)(q)
Planning Inspectorate Scheme Reference	TR010065
Document Reference	7.15
Author:	A46 Newark Bypass Project Team, National Highways

Version	Date	Status of Version
1	October 2024	Deadline 1

1 Introduction

1.1 Purpose of this document

- 1.1.1 The purpose of this document is to set out the locations that National Highways (the “Applicant”) proposes the Examining Authority (ExA) visits as part of the Accompanied Site Inspection (ASI) in relation to the application for development consent for the A46 Newark Bypass (the “Scheme”)
- 1.1.2 The ExA has requested that the Applicant provide a draft ASI itinerary, taking into account sites already visited during the ExA Unaccompanied Site Inspections carried out on 12 August 2024 and 9 October 2024, by Deadline 1 on Tuesday 22 October 2024. The draft ASI can be found at Chapter 3 of this document. A plan of the proposed route can be found at Appendix A of this document. A safety briefing has been included at Appendix B.
- 1.1.3 The ASI is scheduled to take place week commencing 2 December 2024.

2 Attendance at the ASI

- 2.1.1 The Applicant notes that the ASI is not an opportunity for any party to make oral representations to the ExA about the development consent application. However, the ExA may invite participants to indicate specific features or areas of interest.
- 2.1.2 It may be necessary to limit the number of participants who accompany the ExA for safety and logistical reasons. However, the Applicant will accommodate, where possible, those Interested Parties (or their representatives) to join the ASI at specific locations where requested.
- 2.1.3 The Applicant will advertise the ASI and those wishing to participate in the ASI will be able to notify the Planning Inspectorate Case team.
- 2.1.4 Parties wishing to participate in the ASI should also provide the following information:
- Mobile phone number (for contact purposes in relation to the ASI)
 - Any special access arrangements
 - Intention to travel on transport to be provided or their own vehicle
- 2.1.5 Parties should also contact the Planning Inspectorate Case team as soon as possible if they are no longer able to participate in the ASI.

3 Itinerary

- 3.1.1 The proposed itinerary is set out in Table 3.1 below. This includes indicative timings and a description of what is to be observed at each location. The final itinerary for the ASI will be published by the ExA and will be available to view on the Scheme webpage of the National Infrastructure Planning website.
- 3.1.2 The Applicant will provide transport for the ASI. This approach is proposed to minimise traffic disruption particularly on local roads and also to minimise emissions from vehicles.
- 3.1.3 The transport to be provided for the ASI will convey those participants who have confirmed their intention to attend the whole day. Parties planning to join for part of the visit along the route will be expected to arrange their own mode of transport, but have regard to the itinerary timings, locations and parking arrangements. Parking may also be limited at some of the proposed locations. Where this is the case these restrictions are noted in the itinerary at Table 3.1 below.
- 3.1.4 Part of the ASI will be undertaken on footpaths. Therefore these elements are subject to access being suitable for all participants, to good visibility and to weather conditions being appropriate. Participants should ensure appropriate footwear and clothing are worn. The Applicant will provide high-visibility vests. There will be an option to stay in vehicles for the walking element of the ASI.
- 3.1.5 Refreshments and lunch will not be provided. A break has been included in the itinerary. The Applicant will also arrange stops along the route to access welfare facilities.
- 3.1.6 The ASI will be within publicly accessible land as private land would only be accessible with the permission of the landowner.
- 3.1.7 The Applicant will bring any relevant plans or photomontages as well as an ASI brochure detailing the itinerary and providing health and safety advice. A health and safety talk will also take place prior to the commencement of the ASI (the points for which can be found in Appendix B).
- 3.1.8 A plan showing the proposed route and stop points is provided in Appendix A of this document.

Table 3.1 – Proposed Itinerary

Stop	Location	Timings	Description
-	Starting point	9.00 arrival for 9.30 departure	<p>Newark Castle train station</p> <p>The station’s platform one car park will be used as the meeting point for the ASI, allowing access for attendees on foot, by public transport or car. A compulsory site briefing from the Applicant (including health & safety and welfare information) will take place at 9.10 on the bus, and the ASI will begin at 9.30.</p> <p><i>Toilet facilities are available at this location. Paid parking is required at this location and is the responsibility of the individual attendee.</i></p>
1	Kelham Road Main Compound	9.35 – 9.45	<p>Leaving the train station at 9.30 the bus will travel north up Great North Road towards Cattle Market roundabout; the ASI will turn left onto Kelham Road and pull up beside the main proposed compound.</p>
2	Newark Lorry Park and Cattle Market Junction	9.50 – 10.15	<p>Rejoining Great North Road and heading away from Newark, the ASI will turn right and pull into Newark Lorry Park car park.</p> <p>The ASI will disembark and, using the public footpaths available, walk up to Cattle Market roundabout. Crossing north, using the signalised crossing, the ASI will stay on the footpath to view Smeaton’s Arches.</p> <p><i>Toilet facilities are available at this location. Parking for less than two hours is free.</i></p>
3	Brownhills Junction	10.25 – 10.50	<p>Leaving this location and entering Cattle Market roundabout to travel eastbound along the A46 the ASI will cross over Netherlock Viaduct before turning left on to the old Winthorpe Road to park up opposite Bridge House Kennels and Bridge House Farm.</p> <p>At this location the ASI will observe land for the proposed Brownhills Junction and A1 overbridge and hear more about the non-motorised user facilities at this location.</p>
4	Friend Farmer Roundabout	10.55 – 11.15	<p>Rejoining the A46 and heading towards Brownhills roundabout the ASI will take the second exit and travel towards A46 Lincoln. Immediately before the Friendly Farmer roundabout the ASI will pull into the farm access track on the left.</p>

			<p>At this location the ASI will observe the planned A46 Newark Bypass A1 overbridge tie in location and access to ESSO Interchange Service Station.</p> <p><i>Care should be taken at this location when entering and exiting the farm track.</i></p>
5	Hargon Lane, Winthorpe	11.25 – 11.50	<p>Using the nearside slip filter lane ahead of Friendly Farmer roundabout the ASI will head towards Winthorpe on the A46 and take the first exit on Winthorpe roundabout towards Winthorpe village. Along the A1133 the ASI will turn left onto Gainsborough Drive.</p> <p>The ASI will turn left down Hargon Lane but, due to access constrains at the end of Hargon Lane, the ASI will alight at Pocklington Crescent and walk along the footpath to the end of the lane, to meet with the Interested Party who made the recommendation for this location.</p> <p><i>Please note, the end section of Hargon Lane is an access without a formal footpath, so care will need to be taken by the ASI.</i></p>
6	Netherlock Viaduct	12.00 – 12.25	<p>Walking back to the bus at Pocklington Crescent, the ASI will depart Winthorpe and return to Newark via the A46 and Lincoln Road. As it approaches Northgate Retail Park, the ASI will turn right onto Trent Lane (NG23 7AT) into a residential area.</p> <p>At this location the ASI will disembark at the end of Kings Sconce Avenue (NG24 1FX) and walk along the footpath to join the public footpath which runs alongside the River Trent. The ASI will walk along the footpath to Fiddlers Elbow Bridge.</p> <p>The ASI will have the temporary compound, bailey bridge and Netherlock Viaduct sites outlined from the bridge.</p> <p>Weather conditions permitting, the ASI will walk along Bridleway 6 to Netherlock weir.</p>
7	Newark Castle Train Station	12.40	<p>The ASI will return to Newark Castle train station car park where the ASI will end.</p>

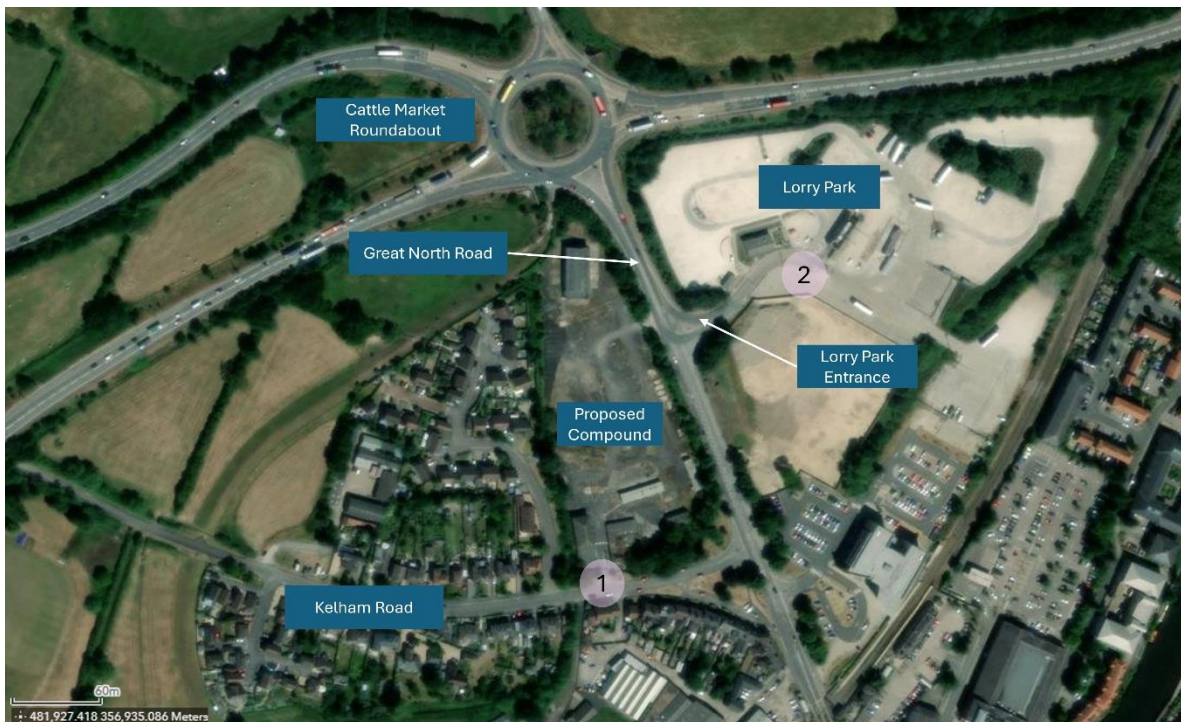
Appendix A – Plan showing the proposed ASI

Start and end location – Newark Castle Train Station, Ossington Way, Newark NG24 1FF



Stop 1 - Kelham Road, Newark NG24 1BX

Stop 2 – Newark Lorry Park, Great North Road, NG24 1BL



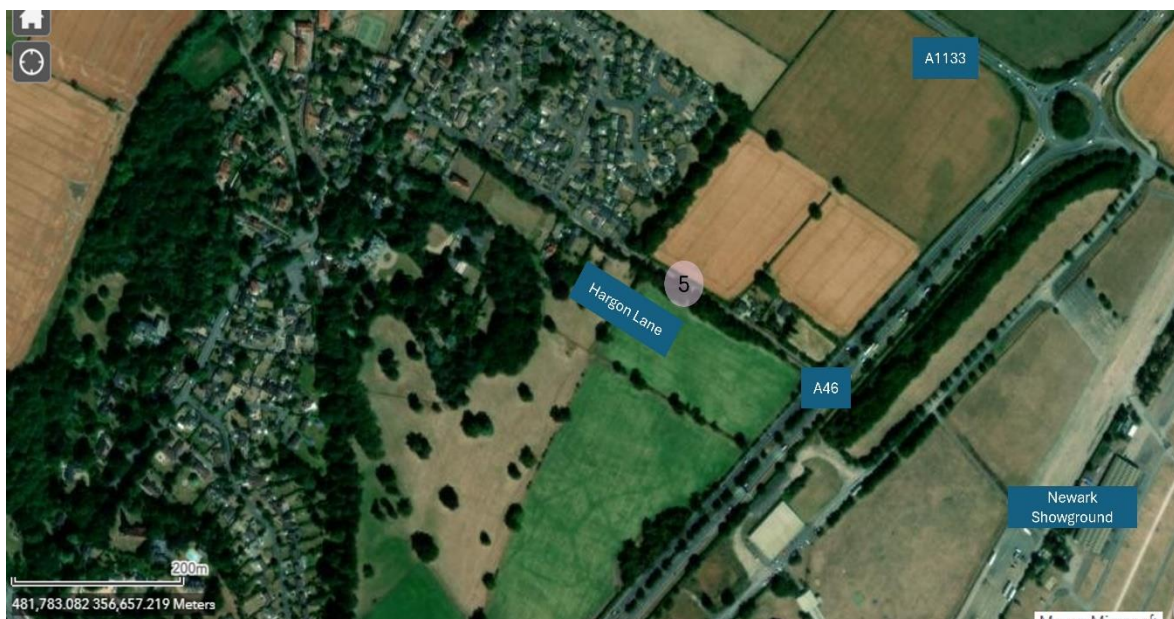
Stop 3 - Bridge House Kennels, Winthorpe Road, Newark, NG24 2AA



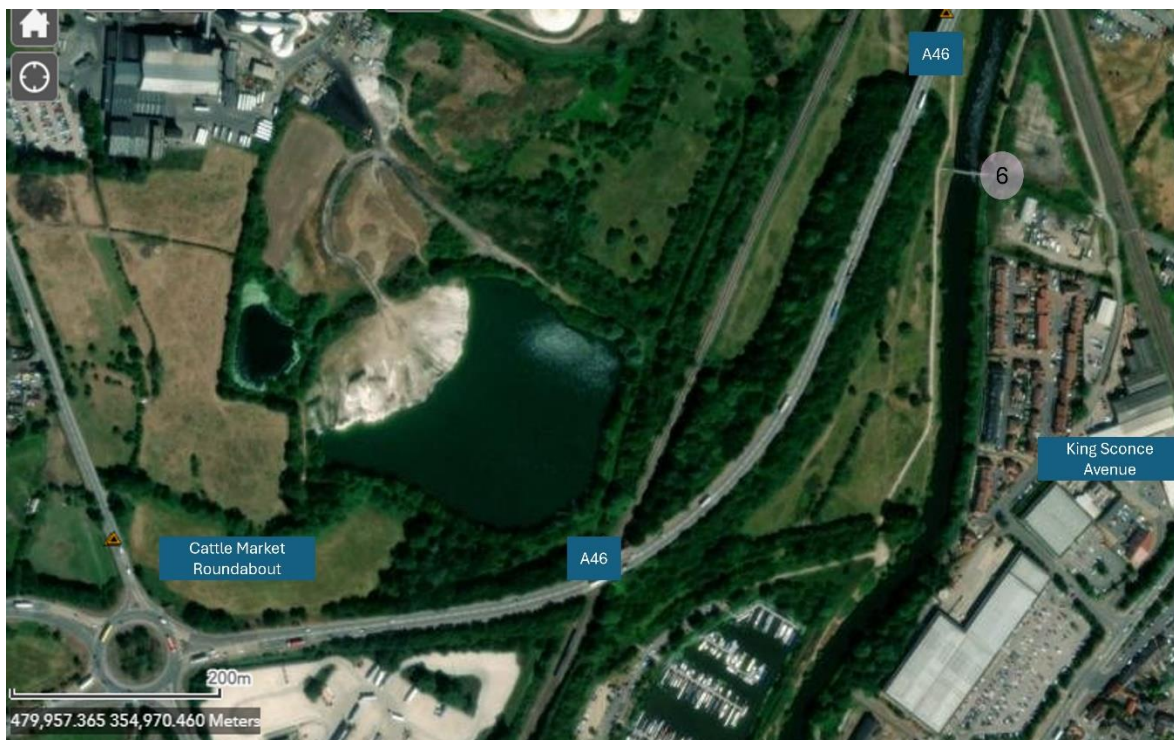
Stop 4 Farm Access, Lincoln Road, Winthorpe, Newark, NG24 2DF



Stop 5 - Hargon Lane, Winthorpe, NG24 2NP



Stop 6 – Fiddlers Elbow Bridge, Newark, NG24 1FS



Appendix B – Safety Briefing

Hazards

Walking on Public Rights of Way

- Uneven ground
- Slips / trips / falls from height
- Traversing stiles

Please do not undertake tasks whilst walking, e.g. note taking / talking on mobile phone. Always stop in a place of safety to discuss matters and perform tasks.

Walking on public footways adjacent to traffic

- Slips / trips / falls from height
- Walking adjacent to high-speed traffic
- Struck by moving vehicle

Please follow the highway code and cross the road at crossing points or where there is adequate visibility of traffic in both directions to judge when it is safe to cross. Please do not stray from the Accompanied Site Inspection Group.

Travelling on Minibus

- Slips in and out of the minibus
- Please ensure that your seatbelt is worn on the minibus at all times

Harmful Flora

Stinging Nettles



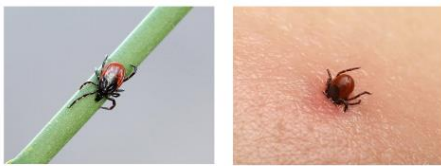
This plant has fine toothed, tapered, somewhat heart-shaped leaves that are 3-15 cm long. Thin catkins of tiny green flowers grow from the leaf axils. The plant can grow between 1 and 2 metres tall depending on location and soil condition. Nettles generally appear in the same locations every year. They thrive in rich soil, moist woodlands, thickets, disturbed areas, along partially shaded trails and riversides

Wild Parsnip Plant



This plant typically grows a low, spindly rosette of leaves in the first year while the root develops. In the second year it flowers on a tall stalk and then dies. The plant can form dense stands and spreads quickly in disturbed areas such as abandoned yards, waste dumps, meadows, open fields, roadsides and railway embankments.

Lyme Disease



When returning to a safe place from walking in long grass please check exposed skin for ticks and remove immediately with tweezers.



Many people with early-stage Lyme disease develop a distinctive circular rash at the site of the tick bite, usually around 3 to 30 days after being bitten. The rash is often described as looking like a bull's-eye on a dart board. More serious symptoms may develop several weeks,

months or even years later if Lyme disease is left untreated or is not treated early on.

These can include: pain and swelling in the joints, problems affecting the nervous system, heart problems, inflammation of the membranes surrounding the brain and spinal cord. You should see your GP if you develop any of the symptoms described above. Make sure you let your GP know if you've spent time in tick infested areas.

Equipment

Available throughout:

- High Visibility Vests are provided and must be worn at all times.

Available on the bus:

- Bottled Water
- Hand sanitiser and wet wipes

Please ensure that all valuables are kept on your person and not left in the bus.